

## TWIN VANE SCALE VALVES

Procol Twin Vane Divertors (Scale Valves) are designed to transfer product directly from a pneumatic conveying system into a weigh hopper. They are also used in multiple silo installations where they allow the use of a single conveying line and venting system. Considerable cost savings can be achieved by using Divertors in this way.

The valves are similar in design to

Procol PC Diverter Valves. To ensure consistent weighments the vanes are operated by twin pneumatic actuators which operate simultaneously to affect a snap action cut-off

Various material options are available and the valves can be supplied with flanged connections if required.

### OPERATING METHOD

The valves are initially set with both vanes in the lower position as shown in Figure 1. This isolates the weigh hopper from the conveying system and allows product to pass over the

hopper. When the valve is operated the vanes move to the raised position shown in Figure 2, which allows product and air to enter the weigh hopper. The product and air separate in the hopper and the air is returned to the conveying line via the return hopper. The product and air separate in the hopper and the air is returned to the conveying line via the return port in the valve base.

When the correct weight is reached the vanes snap to the lower position which again isolates the hopper from the conveying line and allows excess product to be returned to the main store silo via the conveying system.

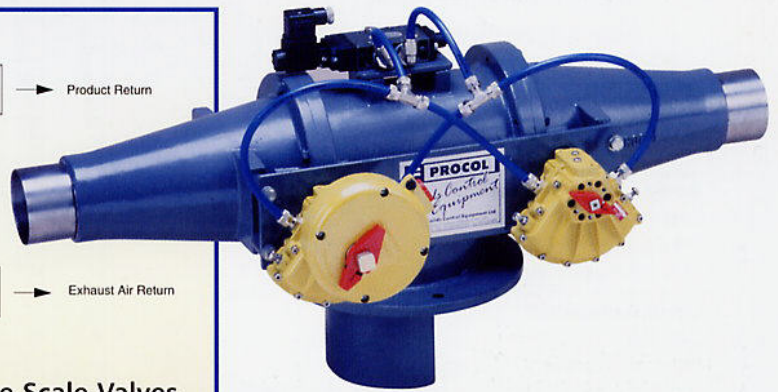


Figure 1

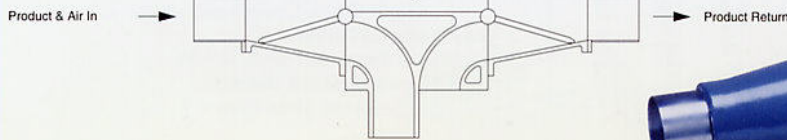
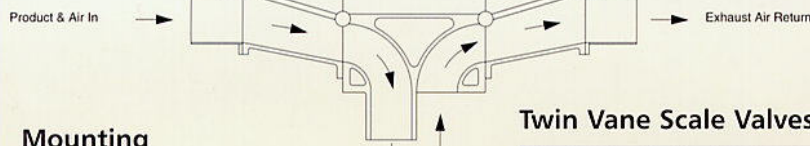
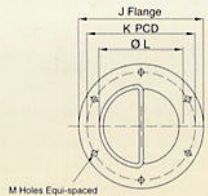


Figure 2



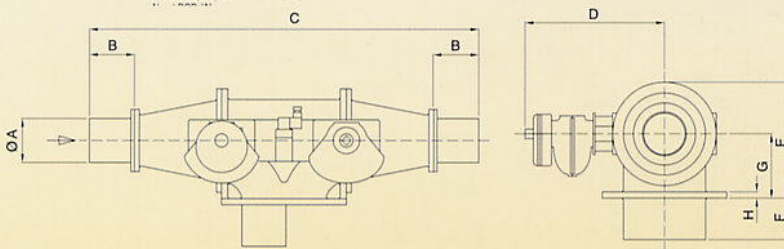
### Mounting Flange Detail



### Twin Vane Scale Valves

#### Valve

Size	A	B	C	D	E	F	G	H	J	K	L	M	N
50	2"	80	645	245	225	100	105	10	194	166	134	4	10
75	3"	85	730	265	250	100	130	12	250	210	166	6	10
100	4"	110	940	340	265	100	140	30	300	260	205	6	14
125	5"	110	1425	390	410	150	235	30	445	400	300	10	22
150	6"	110	1370	390	410	150	235	30	445	400	300	10	22



## ROTARY SCALE VALVES

Rotary Scale Valves are designed for in-flow product diversion directly from a pneumatic conveying system into bulk storage and weigh hoppers. They are suitable for handling powders and granules in a wide range of industries.

The valve has a precision machined cast iron body and endplates. It is fitted with a cast iron precision machined vane, supported by phosphor bronze bushes within the

endplates and operated by a direct coupled pneumatic actuator. The valves are supplied complete with indicator switches and a solenoid operated spring return air control valve.

Rotary Scale Valves are available in two body sizes. However the use of connecting tube adaptors enable them to be used in conveying systems from 1 1/2" to 6" diameter.

The valves may be used with product flow from either direction and with various solenoid voltages but other variations are not available.

